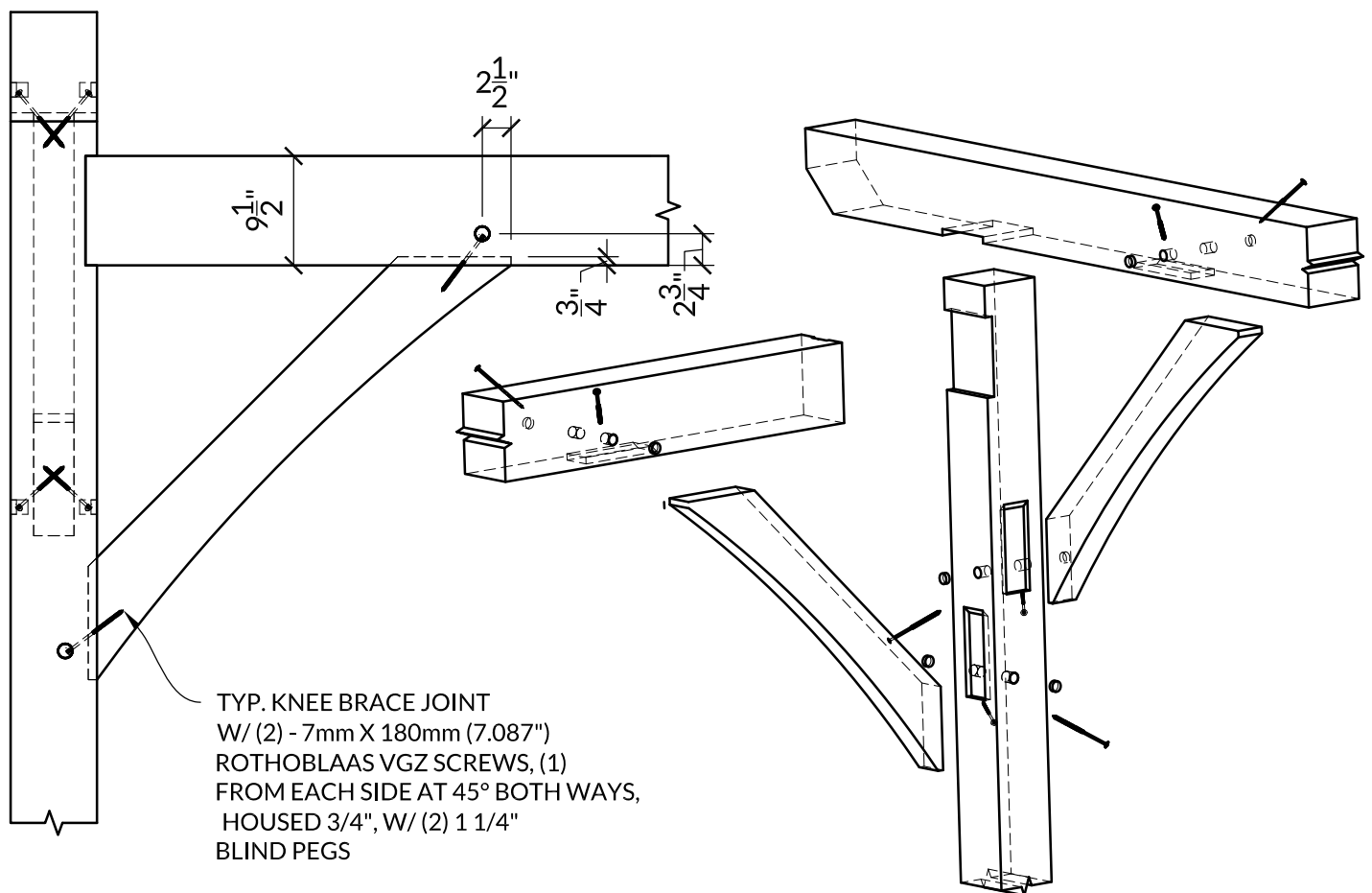


The joint utilizes fully threaded structural screws along with a 3/4" housing. Two screws at each end, one from each side at 45 degrees each way holds everything together. We have found that a 1 1/4" hole allows you to easily install the screws and gives you enough room for the blind pegs that give you that traditional look. We use the Rothoblaas VGZ screws in 7mmx 180mm (7.077") in our plans, kits, and designs.



A Post and Beam Knee Brace Connection

SCALE: 3/4" = 1'-0"